

BUSINESS ARCHITECTURE QUICK-WIN IDEAS



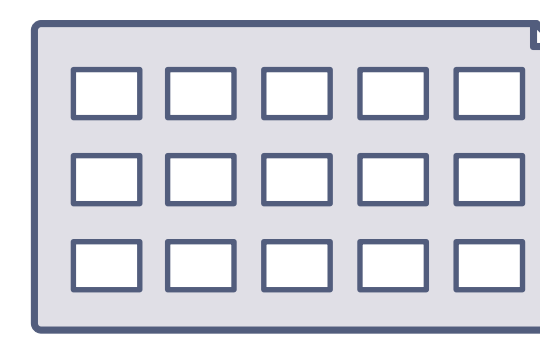
HOURS OR DAYS



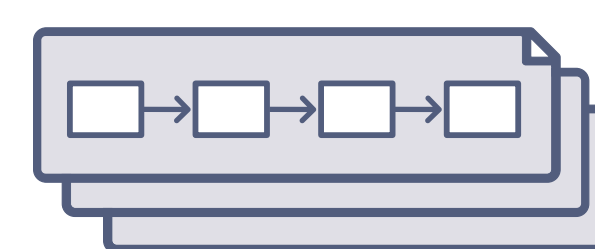
ASSESS THE IMPACT OF ANYTHING

For example, a potential business model change, strategy, innovation idea, product, acquisition, policy change, etc.

Required:

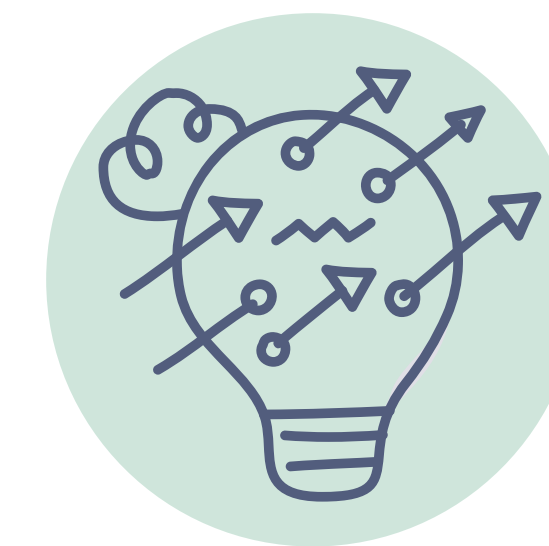


Ideal:



Use it to help:

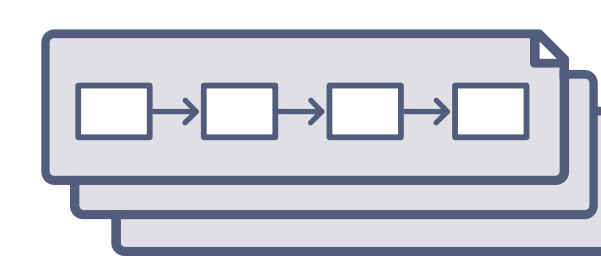
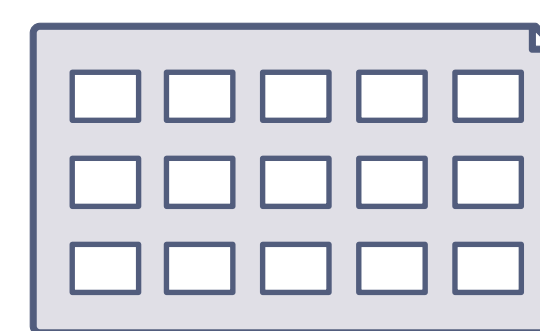
- ✓ A business or technology leader or team member to make a decision, understand their scope or impact, identify collaboration points with others, etc.
- ✓ An agile team (or any other) to identify shared capability / solution opportunities, collaboration points and stakeholders to involve (especially if business architecture was not involved upfront).



FRAME A PROBLEM OR OPPORTUNITY

To help scope, analyze and solve it within the fullest, relevant business context.

Required:



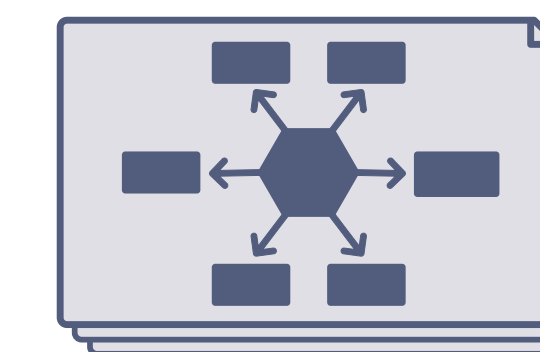
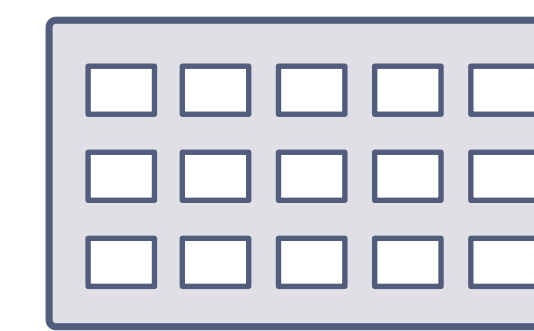
WEEKS



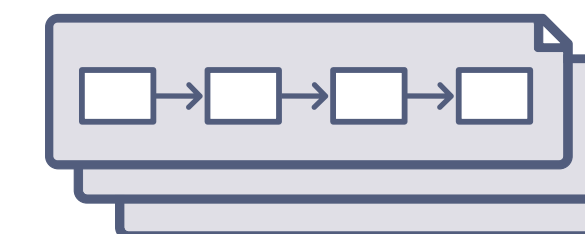
ANALYZE ANYTHING FOR DECISION-MAKING

For example, investments, risks, cost allocations, organization, partners, simplification, system applications, etc.

Required:



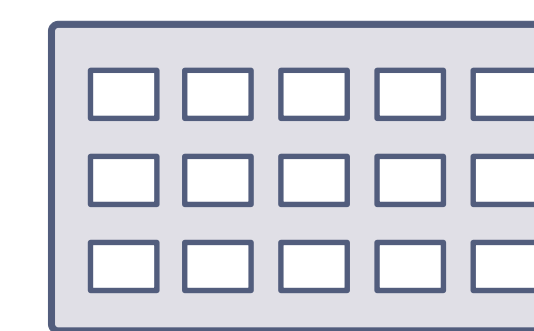
Ideal:



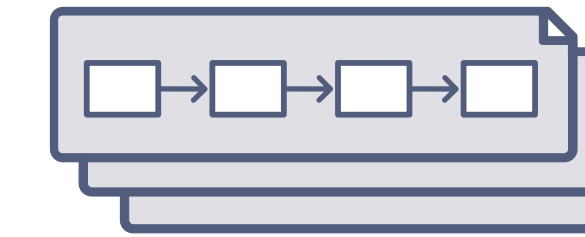
VISUALIZE STRATEGIC DIRECTION

To reflect the most important capabilities (and value streams) to enable the organization's strategies.

Required:



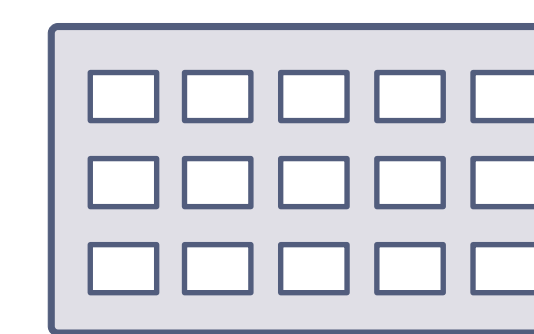
Ideal:



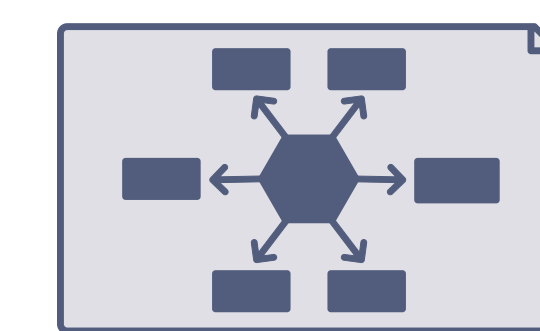
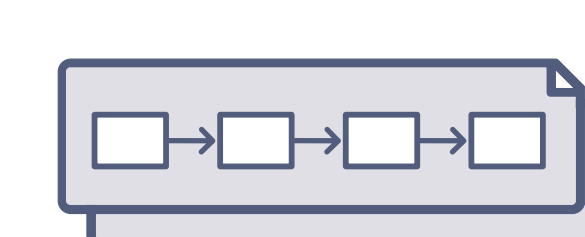
REFLECT A CAPABILITY-ON-A-PAGE

To illustrate an aggregate view of its current state and health, future state, active initiatives, etc.

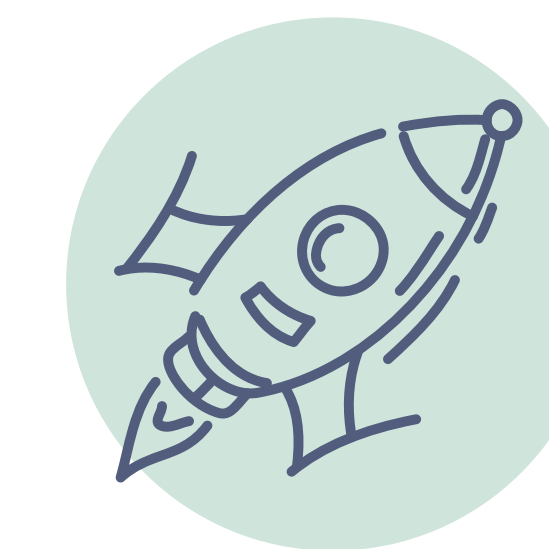
Required:



Ideal:



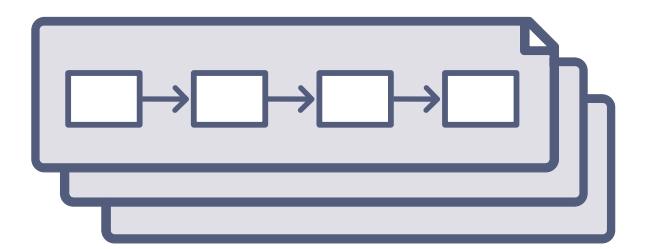
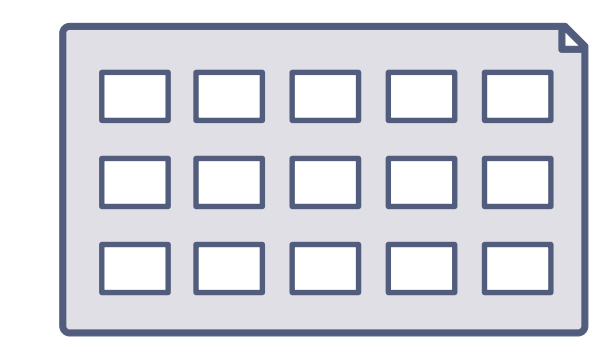
MONTHS



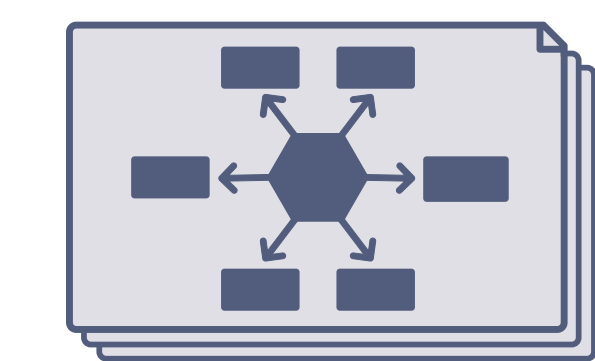
TRANSLATE ONE STRATEGY

To identify business and technology impacts, design target state architecture, and create a strategic roadmap for execution.

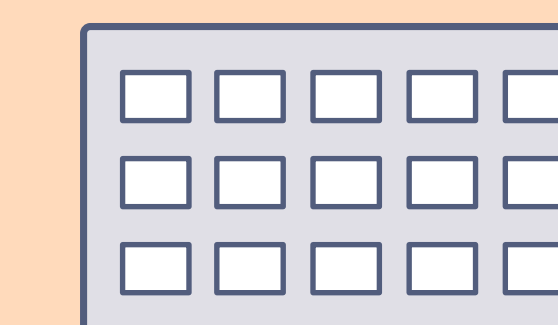
Required:



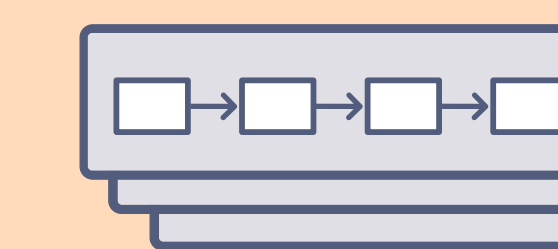
Ideal:



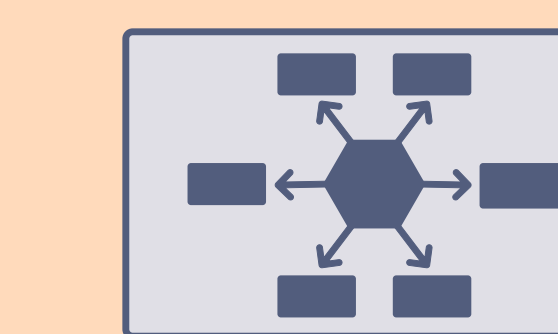
KEY DOMAINS TO LEVERAGE



Capability Map



Value Stream



Other Domains as Applicable (e.g., Strategy, Initiative, Product, Policy, Application, Process, etc.)



transformation

