

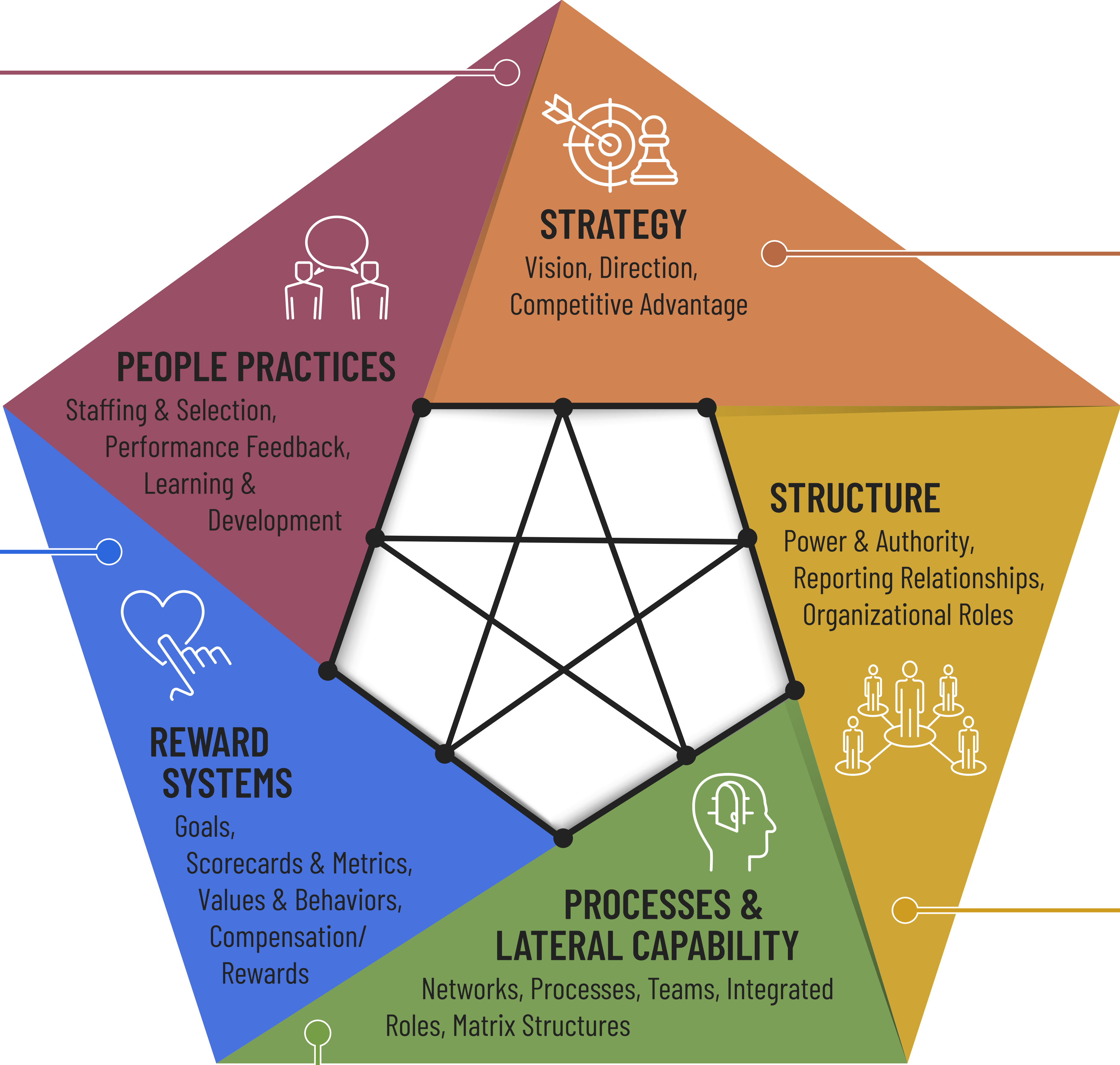
# BUSINESS ARCHITECTURE BENEFITS FOR ORGANIZATION DESIGN

**Business architecture...**

- ✔ Informs on the people (e.g., roles, skills, competencies) needed to deliver the organization's intended value and capabilities, in alignment with its purpose and strategy

**Business architecture...**

- ✔ Provides traceability from the goals, objectives, and metrics of the enterprise to business units to individuals
- ✔ Provides traceability from goals, objectives, and metrics to the value streams and capabilities that can most effectively achieve them



**Business architecture...**

- ✔ Drives clarity and measurability of business objectives and outcomes
- ✔ Ensures the alignment and cohesiveness of strategies, goals, objectives, metrics, and courses of action across an organization
- ✔ Identifies the comprehensive impact of strategy across the entire business and technology environment
- ✔ Translates strategy into the business capabilities necessary to enable it
- ✔ Informs a prioritized and rationalized set of initiatives to execute strategy

**Business architecture...**

- ✔ Represents how an organization is structured, including the products, value, and capabilities it delivers
- ✔ Represents internal and external stakeholders and their role in value delivery
- ✔ Uncovers opportunities for organizational improvement and redesign
- ✔ Informs outsourcing decision-making
- ✔ Provides comprehensive impact analysis for potential organizational changes across the entire business and technology environment

**Business architecture...**

- ✔ Identifies where lateral mechanism are needed
- ✔ Provides a shared, high-level framework to inform lateral mechanism design with natural areas of commonality and an end-to-end value delivery perspective

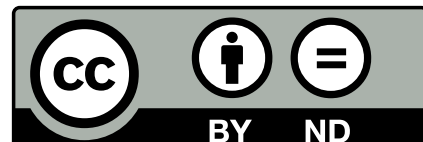


Diagram with business architecture overlay by S2E Transformation ([www.s2etransformation.com](http://www.s2etransformation.com)) based on Star Model by Jay Galbraith. This diagram is licensed under Creative Commons Attribution-NonCommercial-NoDerivatives 4.0 International (CC BY-NC-ND 4.0). You may copy, distribute, and display this work. Under terms of this agreement, you must provide appropriate credit to S2E Transformation and Jay Galbraith. Please link to the CC [license](https://creativecommons.org/licenses/by-nc-nd/4.0/) when citing this work. Distribution of derivative works based on this original diagram is prohibited under this license.